

## How to program KST Radio

### Step 1:

Find the Programming Software from our Programming CD or Download from our website:  
[http://www.twowayradiofactory.com/html\\_info/e\\_Download-7.html](http://www.twowayradiofactory.com/html_info/e_Download-7.html)

Click "Setup" to Install the Software in your Computer.

**Step 2:** Connect the Radio to the Compute with RS232/USB Programming Cable

### A. RS232 Programming Cable:



### B. USB Programming Cable:



**NOTE: If you want to use USB Cable, you also need to install the USB Cable Driver Software in advance.**

WITHOUT the USB Driver, you CAN NOT connect the radios to the computer.

(NOTE: You can find the USB Driver Software from our website:

[http://www.twowayradiofactory.com/html\\_info/e\\_Download-7.html](http://www.twowayradiofactory.com/html_info/e_Download-7.html))

**Step 3: Turn On** the Radios

**Step 4:** Start the Programming Software and Choose the right **COM Port**

NOTE:

1. for RS232 Cable, you just choose the default COM PORT: COM 1
2. for USB Cable, please choose COM 3 or COM 4 or COM 5

**Step 5:**

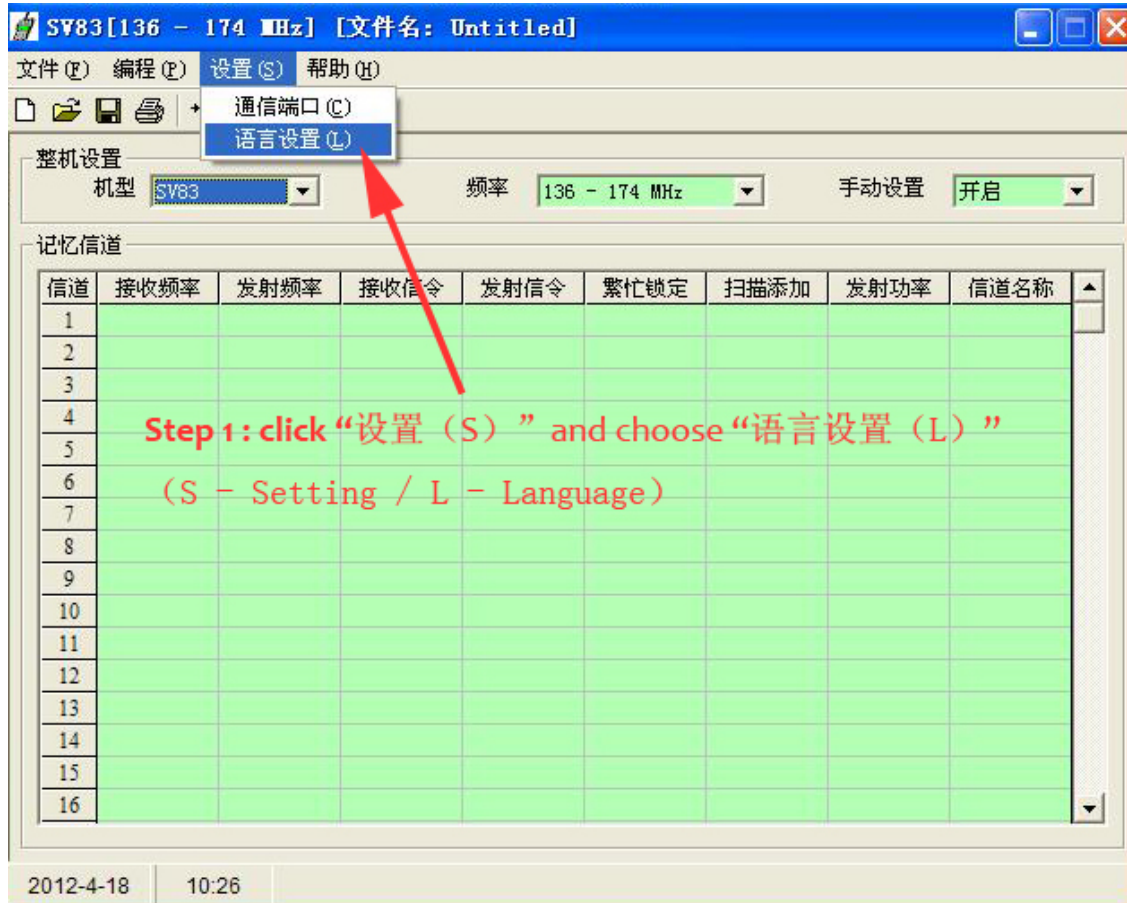
When you choose the right COM PORT you can click the READ Button to read out the default data from The radios.

**Step 6:**

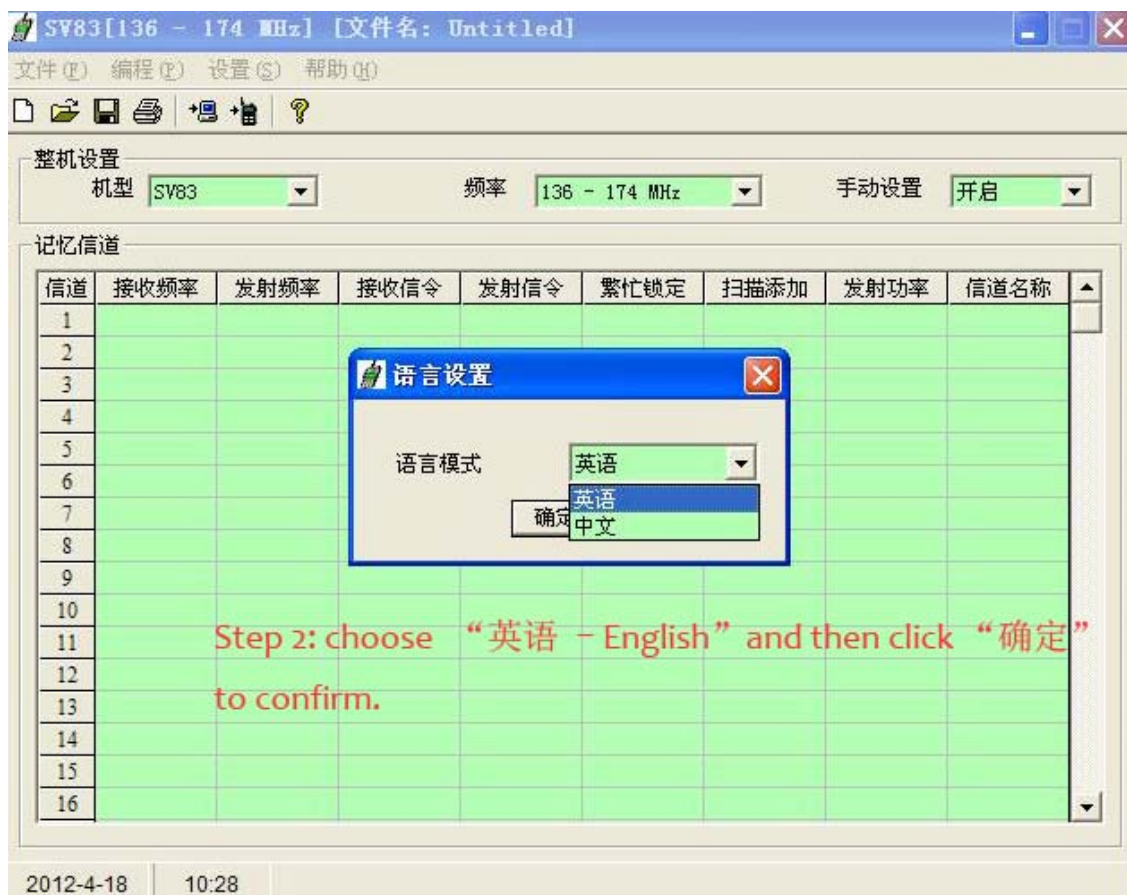
Write the frequency and choose the functions you want in the software and then click "WRITE" button to input the DATA into the radios.

## How to select the Software Language to English

Please follow the NOTE in below pictures: (Take V6 Software as an Example)



Step 1: click “设置 (S)” and choose “语言设置 (L)”  
(S - Setting / L - Language)



Step 2: choose “英语 - English” and then click “确定”  
to confirm.